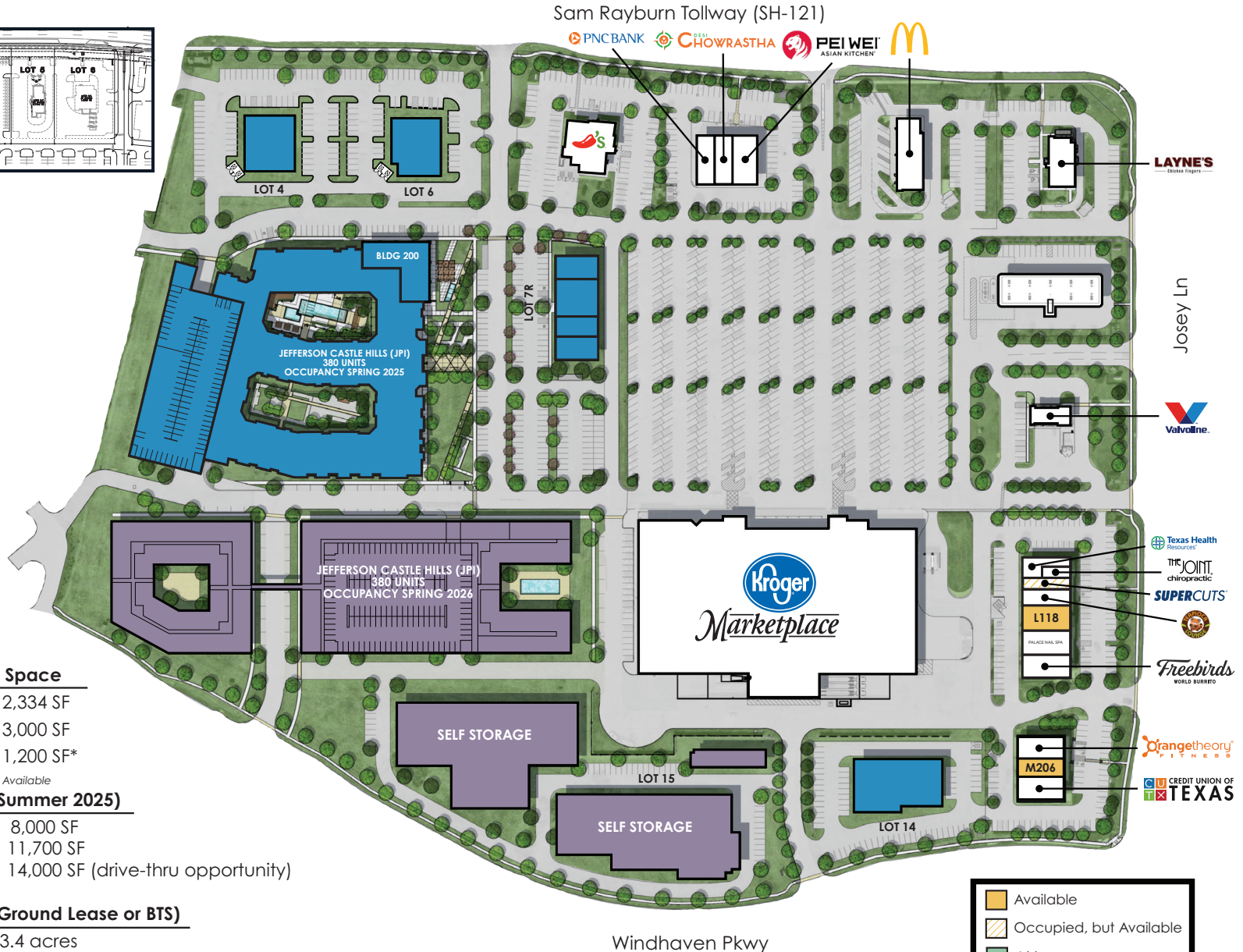
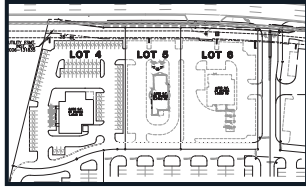


CASTLE HILLS MARKETPLACE | 6225 N JOSEY LN, LEWISVILLE, TX 75056

Option B



Available Space

M206	2,334 SF
L118	3,000 SF
L110	1,200 SF*

*Occupied, but Available

Phase II (Summer 2025)

Bldg 200	8,000 SF
Lot 7	11,700 SF
Lot 14	14,000 SF (drive-thru opportunity)

Phase II (Ground Lease or BTS)

Lot 4-6 3.4 acres

Option A: 2 lots (+/- 7,000 SF dinner house)
 Option B: 3 lots (Bank/Rest. [6], QSR/drive thru [5],
 Dinner house [4])

	Available
	Occupied, but Available
	At Lease
	Phase II
	Phase III

The information was obtained from sources deemed reliable; however, Weitzman has not verified it and makes no guarantees, warranties or representations as to the completeness or accuracy thereof. The presentation of this real estate information is subject to errors; omissions; change of price; prior sale or lease, or withdrawal without notice. You and your advisors should conduct a careful independent investigation of the property to determine if it is suitable for your intended purpose.