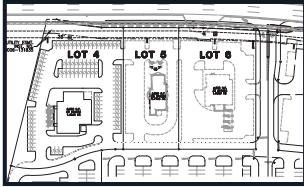


CASTLE HILLS MARKETPLACE | 6225 N JOSEY LN, LEWISVILLE, TX 75056

Option B



Available Space

| | |
|------|----------|
| M206 | 2,334 SF |
| L118 | 3,000 SF |

Phase II (Summer 2025)

| | |
|----------|------------------------------------|
| Bldg 200 | 8,000 SF |
| Lot 7 | 11,700 SF |
| Lot 14 | 14,000 SF (drive-thru opportunity) |

Phase II (Ground Lease or BTS)

| | |
|---------|-----------|
| Lot 4-6 | 3.4 acres |
|---------|-----------|

Option A: 2 lots (+/- 7,000 SF dinner house)
 Option B: 3 lots (Bank/Rest. [6], QSR/drive thru [5],
 Dinner house [4])

The information was obtained from sources deemed reliable; however, Weitzman has not verified it and makes no guarantees, warranties or representations as to the completeness or accuracy thereof. The presentation of this real estate information is subject to errors; omissions; change of price; prior sale or lease, or withdrawal without notice. You and your advisors should conduct a careful independent investigation of the property to determine if it is suitable for your intended purpose.