

11000 MIDDLE FISKVILLE | 11000 MIDDLE FISKVILLE RD, AUSTIN , TX 78753

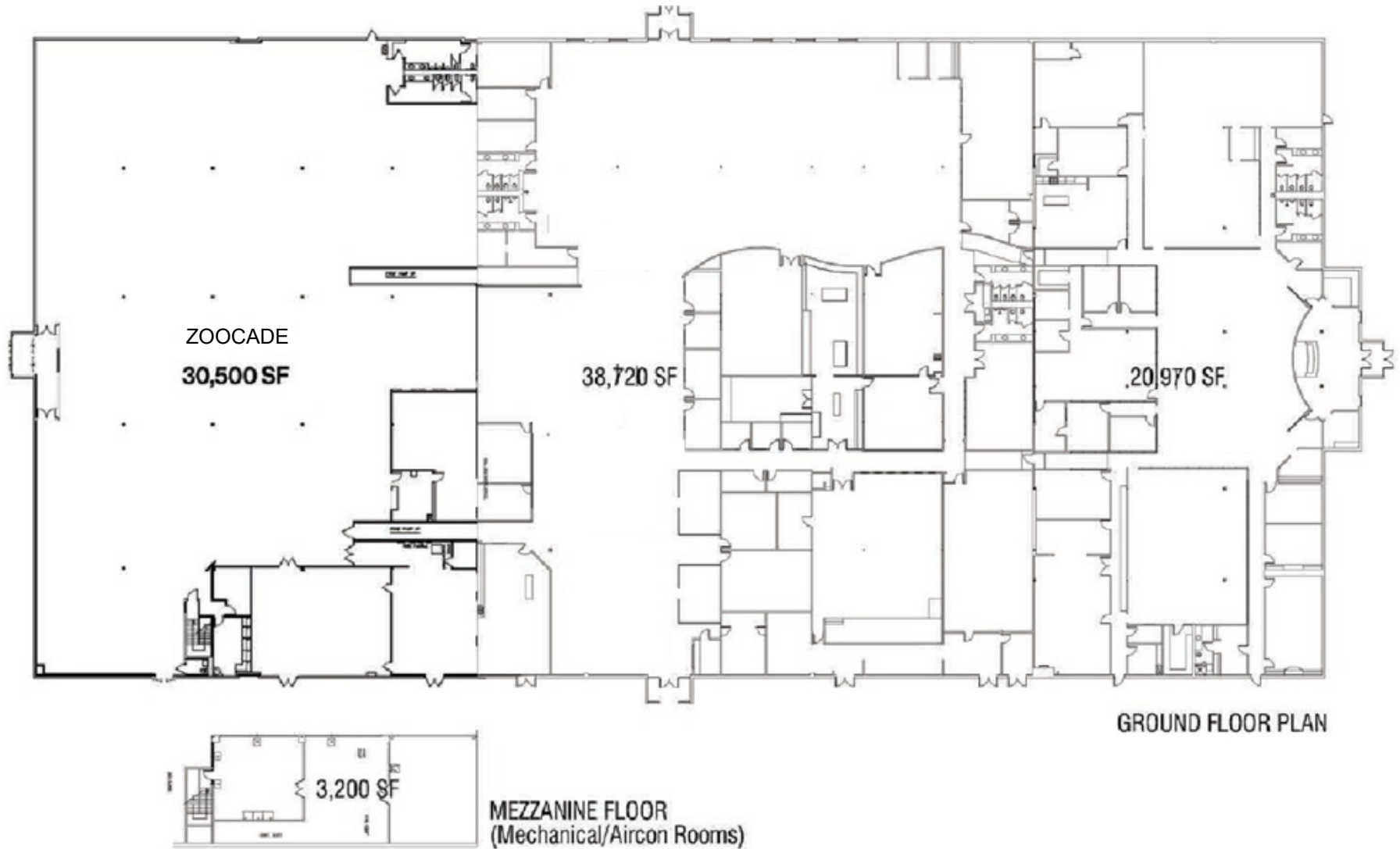


The information was obtained from sources deemed reliable; however, Weitzman has not verified it and makes no guarantees, warranties or representations as to the completeness or accuracy thereof. The presentation of this real estate information is subject to errors; omissions; change of price; prior sale or lease, or withdrawal without notice. You and your advisors should conduct a careful independent investigation of the property to determine if it is suitable for your intended purpose.

BUILDING A

93,390 SF

DIVISIBLE TO 20,970 SF



11000 MIDDLE FISKVILLE | 11000 MIDDLE FISKVILLE RD, AUSTIN , TX 78753

BUILDING C

49,500 SF

2 DOCK-HIGH DOORS

MINIMAL OFFICE
REMAINDER HOT WAREHOUSE

FLEXIBLE TERM

