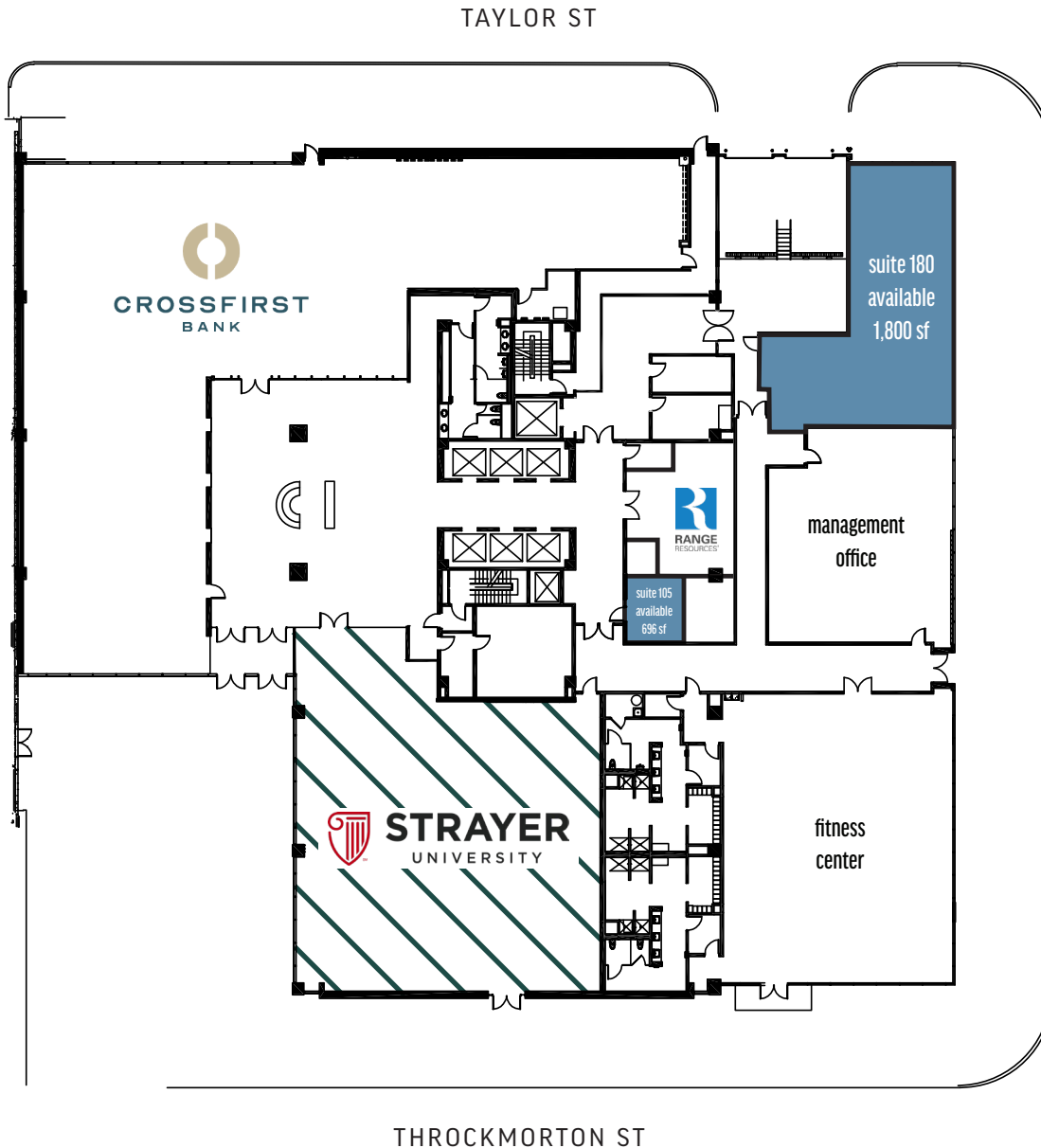


# site plan

two city place

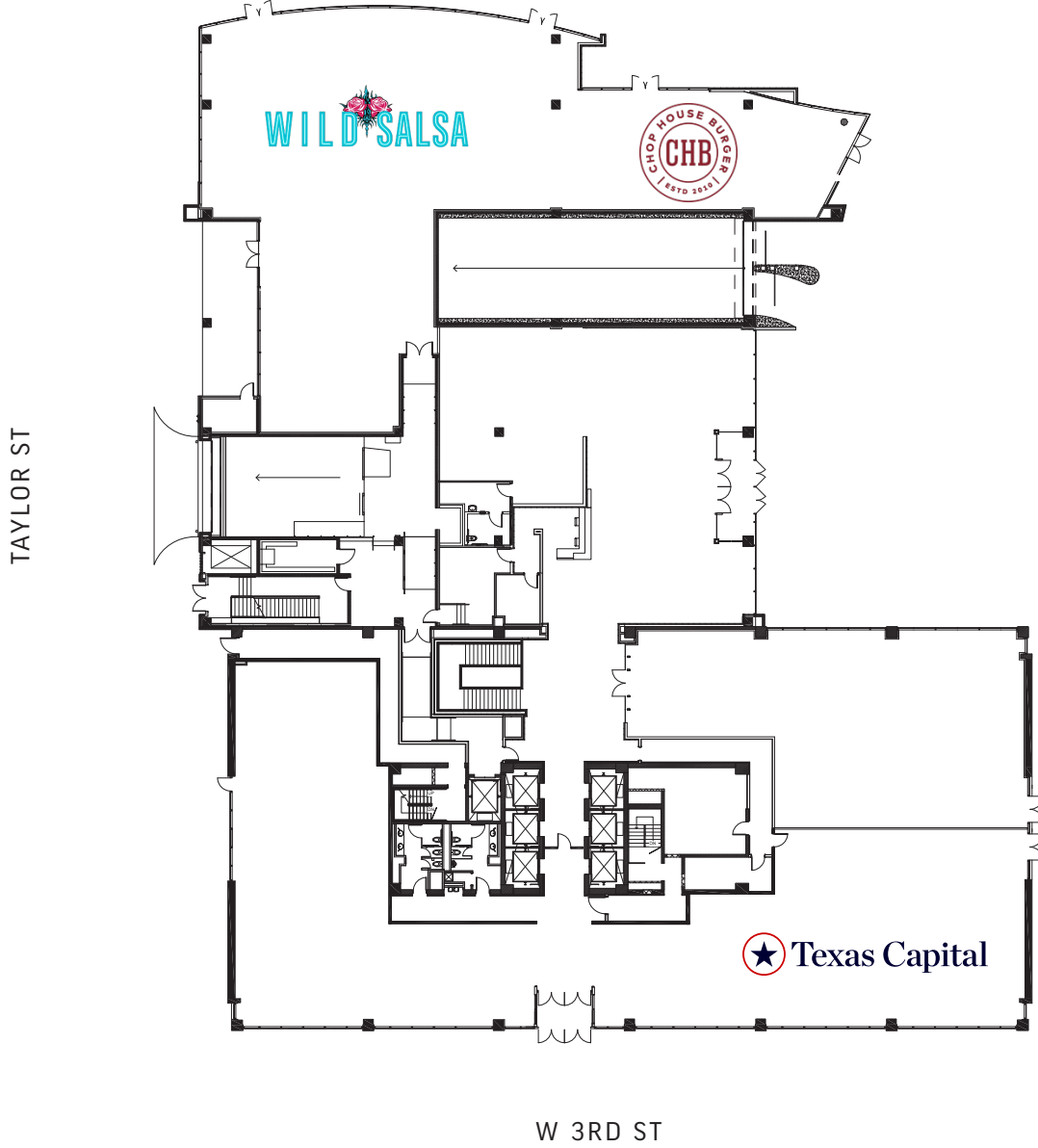


| Suite | Tenant               | SF    |
|-------|----------------------|-------|
| 100   | Range Resources Corp | 571   |
| 105   | Available            | 696   |
| 110   | Fitness Center       | 5,000 |
| 120   | Strayer University*  | 4,857 |
| 150   | Crossfirst Bank      | 9,806 |
| 170   | Management Office    | 2,104 |
| 180   | Available            | 1,800 |
| NNN   | \$14.36              |       |

\*Occupied, but Available (Coming Available May 2025)

# site plan

one city place

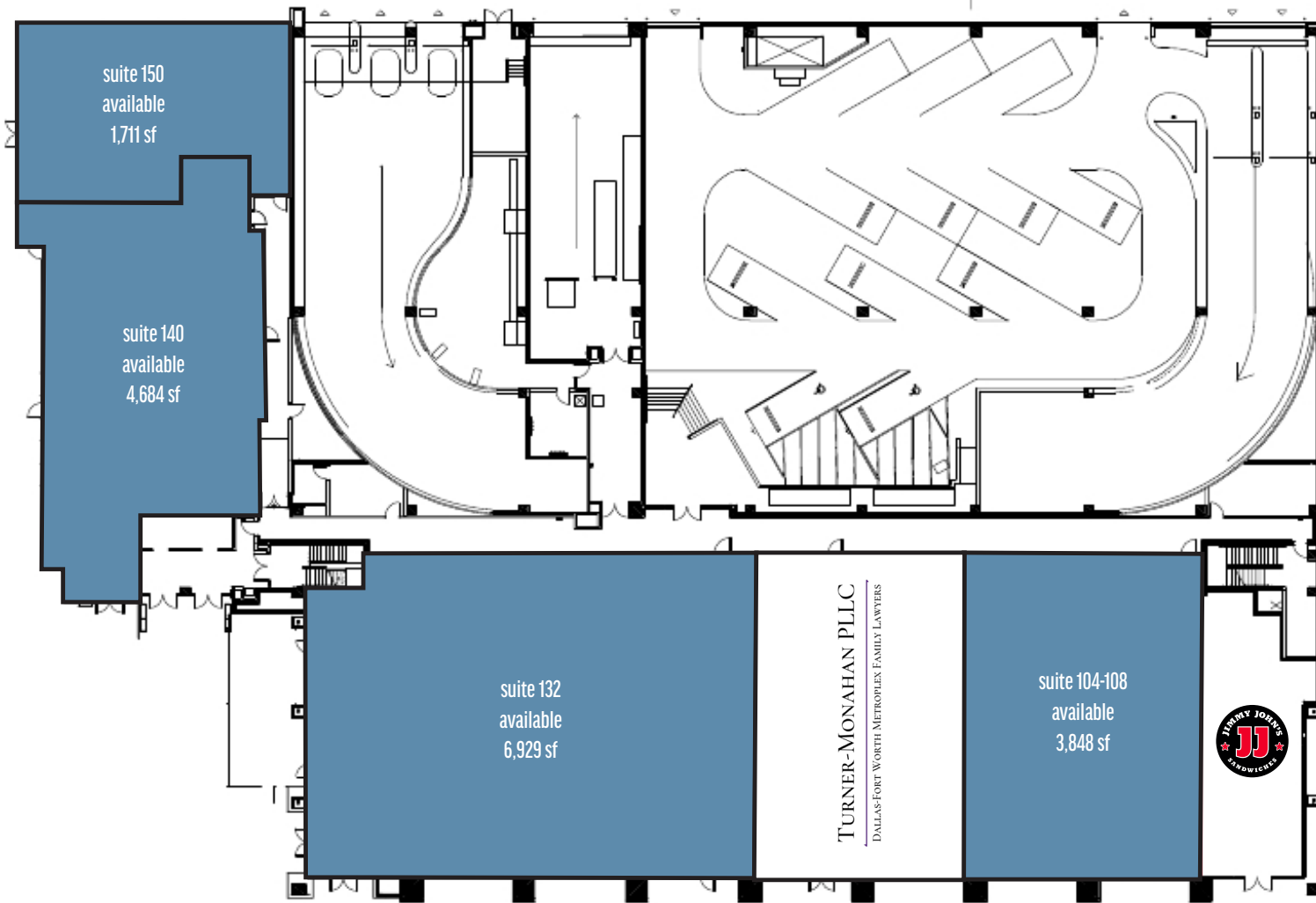


| Suite | Tenant                       | SF    |
|-------|------------------------------|-------|
| 100   | Texas Capital Bank           | 3,934 |
| 180   | Wild Salsa/Chop House Burger | 7,618 |
| NNN   | \$16.41                      |       |

# site plan

city place center

TAYLOR ST



THROCKMORTON ST

| Suite | Tenant               | SF    |
|-------|----------------------|-------|
| 100   | Jimmy John's         | 1,384 |
| 104   | Available            | 1,924 |
| 108   | Available            | 2,034 |
| 116   | Turner-Monahan, PLLC | 3,608 |
| 132   | Available            | 6,929 |
| 140   | Available            | 4,684 |
| 150   | Available            | 1,711 |
| NNN   | \$16.25              |       |